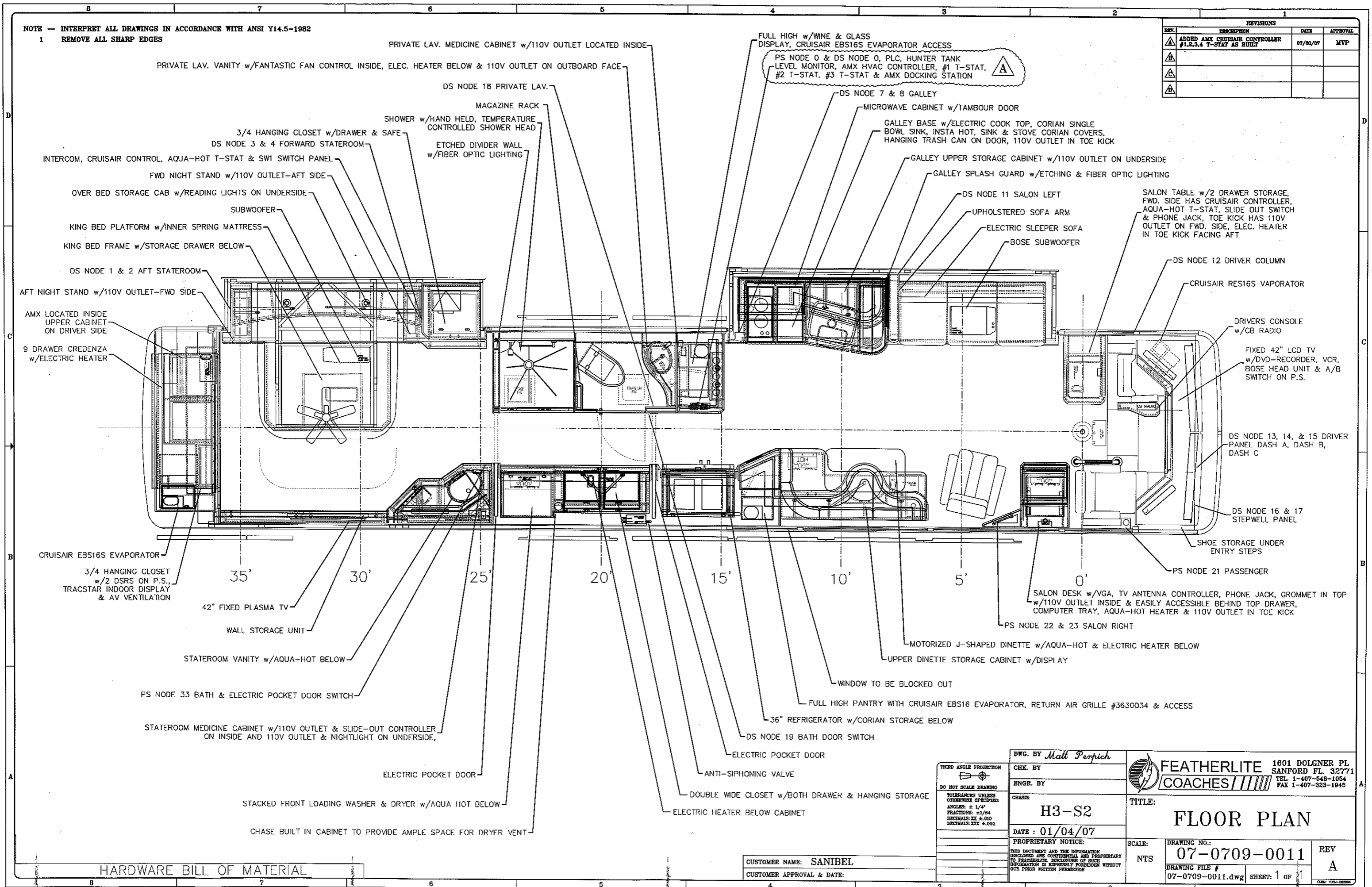


NOTE -- INTERPRET ALL DRAWINGS IN ACCORDANCE WITH ANSI Y14.5-1982

1 REMOVE ALL SHARP EDGES

REVISIONS			
REV.	DESCRIPTION	DATE	APPROVAL
1	ADDED AMX CRUISAIR CONTROLLER #1,2,3,4 T-STAT AS BUILT	07/30/07	MVP
2			
3			
4			



HARDWARE BILL OF MATERIAL

CUSTOMER NAME: SANIBEL
 CUSTOMER APPROVAL & DATE:

THIRD ANGLE PROJECTION DO NOT SCALE DRAWING TOLERANCES UNLESS OTHERWISE SPECIFIED: ANGLES: ± 1/4° FRACTIONS: ± 1/64 DECIMALS: XX ± 0.10 DECIMALS: XXX ± 0.005	DWG. BY <i>Matt Perpich</i> CHK. BY ENGR. BY CHASIS: H3-S2	FEATHERLITE COACHES 1601 DOLGNER PL SANFORD FL 32771 TEL 1-407-548-1054 FAX 1-407-323-1945
	DATE: 01/04/07 PROPRIETARY NOTICE: THIS DOCUMENT AND THE INFORMATION DISCLOSED ARE CONFIDENTIAL AND PROPRIETARY TO FEATHERLITE. DISCLOSURE OF SUCH INFORMATION IS EXPRESSLY FORBIDDEN WITHOUT OUR PRIOR WRITTEN PERMISSION.	